



TRADE PRICELIST SECTION 1: ELECTRICAL / ELECTRONIC PARTS



Portico Products

Lath Lane
Smethwick
West Midlands
B66 1EA

telephone: 0121 553 7222
fax: 0121 553 3577
email: sales@porticoproducts.com
website: www.porticoproducts.com



NOTES:

- All prices are nett GBP ex works plus carriage* plus VAT
- All orders are subject to our standard terms & conditions as laid out in our TRADE PRICELIST SECTION 10 and available on request
- If you can't see the item you want, please call our sales department - as well as stocked items we have access to a huge range of products bought in to order
- Quantity discounts refer to the Unit of Sale for that item - eg: the 5+ price for an item priced in 1000s means that to buy at that price you would need to buy 5000+ pcs, the 10+ price for an item priced per metre means that to buy at that price you would need to buy 10+ mtrs
- Quantity discounts are awarded on an order by order basis, however some may be available for call-off orders - please ask our sales team for details

*carriage and packing as laid out in our TRADE PRICELIST SECTION 10

DYNAMO TUBE MOTORS



MODEL	Nm	LIFT/KG 4" TUBE	M/O'RIDE			
				1+	5+	10+
DYN50-S	50	72	N	28	27	26/ea
DYN50	50	72	Y	42	40	38/ea
DYN100	100	138	Y	56	54	52/ea
DYN140	140	205	Y	91	88	84/ea
DYN230	230	330	Y	101	97	93/ea
DYN300	300	420	Y	125	119	113/ea

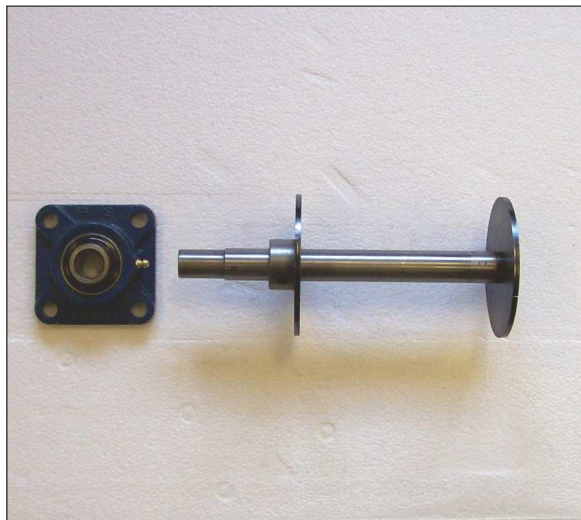
ALL MOTORS SUPPLIED WITH ONE SET OF STANDARD DRIVE/LIMIT ADAPTORS AT NO EXTRA CHARGE—EXTRA SETS OF ADAPTORS AVAILABLE AS BELOW:**

DYNAMO ACCESSORIES

DYN50-AD60	Adaptors to suit DYN50 - 60mm octagonal tube	7.50/set	**
DYN50-AD70	Adaptors to suit DYN50 - 70mm octagonal tube	7.50/set	**
DYN50-AD89	Adaptors to suit DYN50 - 89mm round tube	7.50/set	**
DYN100-AD70	Adaptors to suit DYN100 - 70mm octagonal tube	7.50/set	**
DYN100-AD89	Adaptors to suit DYN100 - 89mm round tube	7.50/set	**
DYN100-AD4-9swg	Adaptors to suit DYN100 - 4" 9swg round tube	7.50/set	**
DYN140+-AD4-9SWG	Adaptors to suit DYN140 / 230 / 300 - 4" 9swg round tube	7.50/set	**
DYN140+-AD4-16SWG	Adaptors to suit DYN140 / 230 / 300 - 4" 16swg round tube	7.50/set	**
DYN140+-AD5-14SWG	Adaptors to suit DYN140 / 230 / 300 - 5" 14swg round tube	25.00/set	**
DYNEYEEX50/100	Extended override assembly for DYN50 and DYN100	7.50/ea	
DYNEYE100	Straight override eye for DYN100	2.50/ea	
DYNEYE140+	Straight override eye for DYN140 / 230 / 300	2.50/ea	

ALL PRICES NETT EX WORKS PLUS CARRIAGE PLUS VAT

IDLER ENDS



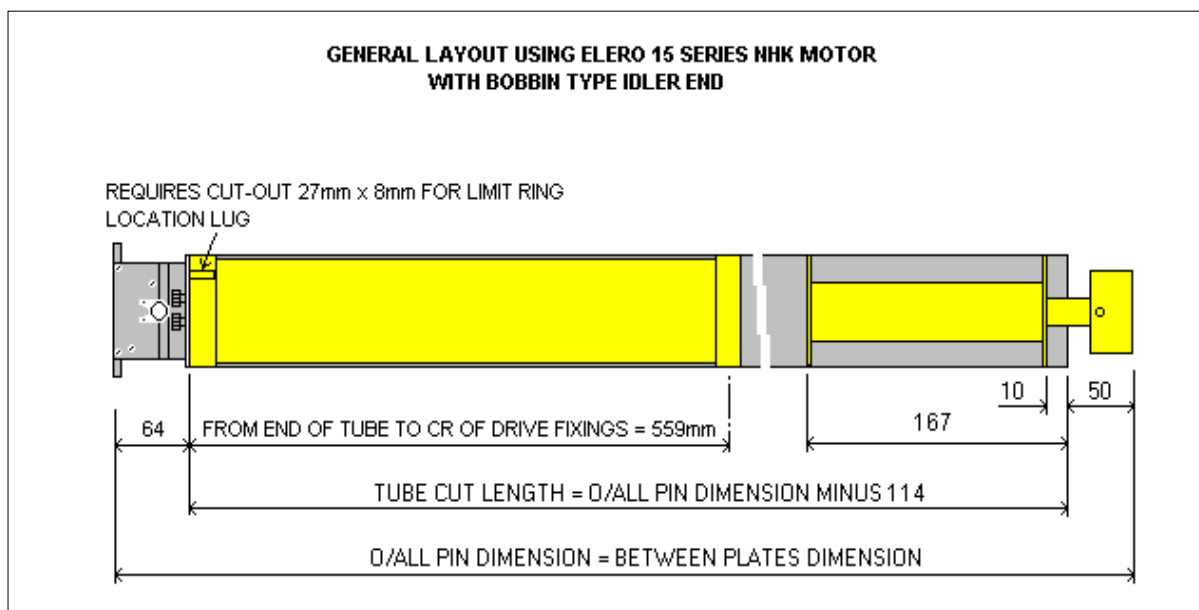
		1+	5+	10+
<u>TO SUIT 4" TUBES:</u>				
SPINDLE416	Spindle Discs & Bearing 4" 16swg	9.99	9.75	9.43/ea
SPINDLE410	Spindle Discs & Bearing 4" 10swg	9.99	9.75	9.43/ea
SPINDLE409	Spindle Discs & Bearing 4" 9swg	9.99	9.75	9.43/ea
SPIN416SQ	18mm Square Spindle & Discs 4" 16swg	5.50	5.40	5.10/ea
SPIN409SQ	18mm Square Spindle & Discs 4" 9swg	5.50	5.40	5.10/ea
BOB4	Lost Bobbin 4" 16swg	6.50	6.38	6.20/ea
BOB410	Lost Bobbin 4" 10swg	6.50	6.38	6.20/ea
<u>TO SUIT 5" TUBES:</u>				
SPINDLE510	Spindle Discs & Bearing 5" 10swg	17.99	17.49	16.99/ea

ALL OF OUR TUBE MOTORS CARRY A 5 YEAR MANUFACTURER'S GUARANTEE

ALL LIFTING CAPACITIES ARE BASED ON A CENTRE LINE OF BARREL HEIGHT OF 2.5MTR - THE LIFTING CAPACITY WILL INCREASE FOR LOWER HEIGHTS AND DECREASE FOR HIGHER HEIGHTS (PLEASE CONTACT OUR TECHNICAL DEPT FOR FURTHER ADVICE AND DETAILED LIFTING CHARTS)

PLEASE NOTE THAT IN ADDITION TO THE MOTORS LISTED ON THESE 2 PAGES, WE CAN ALSO OBTAIN ANY OTHER MOTOR FROM THE RANGES, AND ALSO ANY OTHER MOTOR OF ANY MANUFACTURE

TUBE MOTORISED BARRELS



METHOD OF PRICING

WE CAN FIT ANY OF THE TUBE MOTORS ON PAGE 1.2 TO TUBE FOR WHICH THEY ARE SUITABLE. TO WORK OUT THE PRICE OF THE COMPLETE ASSEMBLY **SIMPLY CHOOSE YOUR MOTOR AND THEN ADD THE RELEVANT BARREL CODE FROM THIS LIST.**

BARREL CODES for 4" BARRELS

	TUBE SIZE	IDLER TYPE	PIN SIZE	PRICE	E/O FOR STUDS
MROL1	4" 16swg	Bobbin	≤1000mm	42.00	2.00
MROL2	4" 16swg	Bobbin	≤2000mm	53.00	4.00
MROL3	4" 16swg	Bobbin	≤3000mm	56.00	6.00
MROL4	4" 16swg	Bobbin	≤4000mm	75.00	9.00
MROL6	4" 16swg	Bobbin	≤6100mm	84.00	12.00
MROL4-409	4" 9swg	Bobbin	≤4000mm	101.00	9.00
MROL6-409	4" 9swg	Bobbin	≤6100mm	115.00	12.00
MROL1SB	4" 16swg	Safety Brake type*	≤1000mm	40.00	2.00
MROL2SB	4" 16swg	Safety Brake type*	≤2000mm	52.00	4.00
MROL3SB	4" 16swg	Safety Brake type*	≤3000mm	55.00	6.00
MROL4SB	4" 16swg	Safety Brake type*	≤4000mm	74.00	9.00
MROL6SB	4" 16swg	Safety Brake type*	≤6100mm	83.00	12.00
MROL4-409SB	4" 9swg	Safety Brake type*	≤4000mm	100.00	9.00
MROL6-409SB	4" 9swg	Safety Brake type*	≤6100mm	114.00	12.00

BARREL CODES for 60 / 70mm OCTAGONAL BARRELS

	TUBE SIZE	IDLER TYPE	PIN SIZE	PRICE
MR6015-R	60mm	Retracting	≤1500mm	33.00
MR6030-R	60mm	Retracting	≤3000mm	36.00
MR6015	60mm	Telescopic	≤1500mm	33.00
MR6030	60mm	Telescopic	≤3000mm	36.00
MR7030	70mm	Telescopic	≤3000mm	48.00
MR7058	70mm	Telescopic	≤5800mm	55.00
MR6015 SB	60mm	Safety Brake type*	≤1500mm	33.00
MR6030 SB	60mm	Safety Brake type*	≤3000mm	34.00
MR7030 SB	70mm	Safety Brake type*	≤3000mm	47.00
MR7058 SB	70mm	Safety Brake type*	≤5800mm	54.00

*NONE OF THE ABOVE PRICES INCLUDE FOR THE SAFETY BRAKES THEMSELVES - PLEASE REFER TO **PAGE 1.7**. FOR T CLIPS OR AUTOLOCKS ON OCTAGONAL BARRELS PLEASE REFER TO SECTION 8: CONTINENTAL SHUTTERS

KEYSWITCHES

		1+	10+	20+
GEBAMS1-2T	16A Slimline (2 WAY)	11.36	11.25	10.97/ea
GEBAMS1-1T	16A Slimline (1 WAY)	12.45	12.19	11.55/ea
GEBAS32	32A Traditional Cube (2 WAY)	14.97	14.28	13.87/ea
KA	Extra over for Key-Alike	2.00/ea		
KB	Keyblanks for keyswitches	1.20/ea		
KC	Extra cut keys for keyswitches	3.00/ea		
BOX	Steel Padlockable Box for keyswitches	4.97	4.47	3.99/ea



OTHER SWITCHES

		1+	10+	20+
ROCKS	Rocker Switch surface mounted	2.99	2.69	2.25/ea
ROCKG	Gewiss Rocker Switch surface mounted	6.30	6.24	5.97/ea
ROTM	Rotary Switch surface mounted	4.25	4.21	3.99/ea
PUSH1	1 Push-Button Station	7.43	7.36	7.24/ea
PUSH2	2 Push-Button Station	9.54	9.45	9.30/ea
PUSH3	3 Push-Button Station	10.39	10.24	10.08/ea
PUSH3KEY	3 Push-Button Station + keyswitch	55.25	54.53	53.58/ea



MANUAL OVERRIDE CRANKS

		1+	10+	20+
CRANK1.1	1100mm fixed crank with hook	5.14	5.09	4.97/ea
CRANK1.4	1400mm fixed crank with hook	5.69	5.61	5.47/ea
CRANK2.2	2200mm fixed crank with hook	6.28	6.12	5.97/ea
CRANK3	3000mm fixed crank with hook	6.85	6.63	6.47/ea



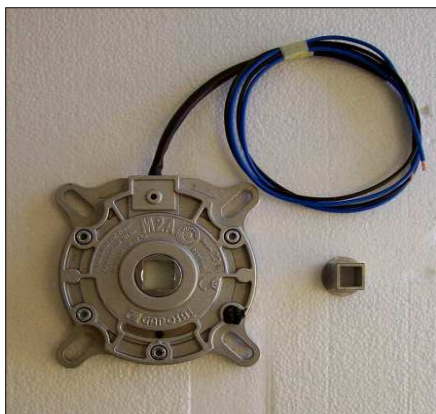
MANUAL OVERRIDE CONNECTIONS

		1+	10+	20+
XO80	45° u/j for 8mm sq / 8mm round	7.25	7.12	6.95/ea
XO79	straight sleeve for 8mm sq / 8mm round	1.65	1.54	1.50/ea
SQSQUJ	45° u/j for 8mm sq / 8mm sq	8.75	8.56	8.49/ea
STOSQSQ	straight sleeve for 8mm sq / 8mm sq	2.85	2.67	2.60/ea



MANUAL OVERRIDE SECURITY

		1+	5+	10+
OSL	Override Security Lock (High Level) (THIS ITEM IS MARKED "1" ON THE PHOTO)	49.99	46.99	45.68/ea
OSLLOW	Override Security Lock (Low Level - incl crank) (THIS ITEM CONSISTS OF EVERYTHING NOT MARKED "1" ON THE PHOTO)	69.99	66.98	62.35/ea



SAFETY BRAKES

		CAPACITY	TUBE	BORE	1+	5+	10+
CRO7706-HD	Safety Brake (includes idler shaft & discs for 4" tube)	460kg	4"	25mm rnd	73	69	67/ea
CRO7706	Safety Brake	134kg	4"	13mm sq	28	27	26/ea
CRO7706-LB	Safety Brake	134kg	4"	18mm sq	28	27	26/ea
CRO2377	Idler End for CRO7706 (60mm oct tube)				2.99	2.76	2.71/ea
CRO2379	Idler End for CRO7706 (70mm oct tube)				2.99	2.76	2.71/ea
CRO2377	Idler End for CRO7706-LB (4" round tube)						



ELECTRICAL INTERLOCK SAFETY SWITCHES

BOTH OF THESE INTERLOCKS ARE USED TO ISOLATE THE POWER FROM THE MOTOR ON A SHUTTER, TO PREVENT THE DOOR BEING OPENED WHILST THE PINLOCKS OR GROUND UNIT(S) ARE STILL ENGAGED, THUS EITHER STALLING THE MOTOR OR DAMAGING THE DOOR.

NOTE THAT PINLOCKS OR PADLOCKS/GROUND UNITS SHOULD BE ADDED TO THE PRICES BELOW.

ISOPAD	Electrical Interlock Isolator (Padlocks)	35.99	35.42	34.28/ea
ISOPIN	Electrical Interlock Isolator (Pinlocks)	34.75	34.25	33.99/ea



PHOTOCELLS AND SAFETY EDGES

NOTE THAT THE PRICES FOR PDT ROLLERTEC REMOTES ON THE FOLLOWING PAGE INCLUDE FOR A PRESSURE SENSITIVE SAFETY EDGE

RT-PHOTO	Reflective Photocell (for RT remotes)	63.00	59.99	57.00/ea
PHOTO	Reflective Photocell	33.50	31.45	30.50/ea
AIR	Airswitch with 3m curly cable	55.00	53.00	51.00ea
SAFEEDGE	Rubber Safety Edge (pneumatic type)	3.75	3.50	3.15/mtr
SEALCARS	Steel C Carrier for SAFEEDGE x 6mtr	2.75	2.50	2.15/mtr
SEAL	Endseals for SAFEEDGE	4.75	4.50	3.80/pr

REMOTE CONTROLS

		1+	5+	10+
SHUTTERCOM	Tube Motor Remote c/w 2 Transmitters	29.99	29.25	29.47/ea
RTKIT1-2500	RT-GAR remote + RTEDGE25 safe edge	142.99/ea		
RTKIT1-3000	RT-GAR remote + RTEDGE30 safe edge	147.75/ea		
RTKIT1-3500	RT-GAR remote + RTEDGE35 safe edge	152.52/ea		
RTKIT1-4000	RT-GAR remote + RTEDGE40 safe edge	157.29/ea		
RTKIT1-4500	RT-GAR remote + RTEDGE45 safe edge	162.05/ea		
RTKIT1-5000	RT-GAR remote + RTEDGE50 safe edge	166.82/ea		
RTKIT1-5500	RT-GAR remote + RTEDGE55 safe edge	171.59/ea		

Note that the relevant safe edge carrier (see page 1.7) must be added to the above prices for RTKITs



TRANSMITTERS / SPARES

		1+	5+	10+
SHUTC-T4	Standard keyfob for SHUTTERCOM (c/w cover)	9.99	9.49	8.99/ea
SHUTC-T1	Alternative keyfob for SHUTTERCOM	9.99	9.49	8.99/ea
SHUTC-T2	Alternative keyfob for SHUTTERCOM	9.99	9.49	8.99/ea
SHUTC-T3	Palm Transmitter for SHUTTERCOM	10.99	10.49	9.99/ea
SHUTC-T3M	Multi-channel Palm for SHUTTERCOM	11.99	11.49	10.99/ea
SHUTC-BATT	Battery for SHUTTERCOM transmitters	1.50/ea		
RTTRAN1	Transmitter for RT-GAR (single channel)	19.75	19.07	18.60/ea

GROUP CONTROL RELAYS

		1+	5+	10+
RELAY2	Group Control relay for 2 tube motors	26.50	26.11	25.47/ea
RELAY4	Group Control relay for 4 tube motors	37.75	37.38	36.47/ea
RELAY4S	Group Control for 4 Elero type NHK15	77.99	76.88	75.00/ea
RELAY6	Group Control relay for 6 tube motors	47.99	47.66	46.50/ea
RELAY8	Group Control relay for 8 tube motors	61.75	61.50	60.00/ea

